

Soybean Variety Selection

Ryan Heiniger
Director - NCOVT

Maturity Group

Plant early

- More vegetative growth and node development prior to flowering
- **Full Season:** Late April
- **Double crop:** Immediately after wheat harvest

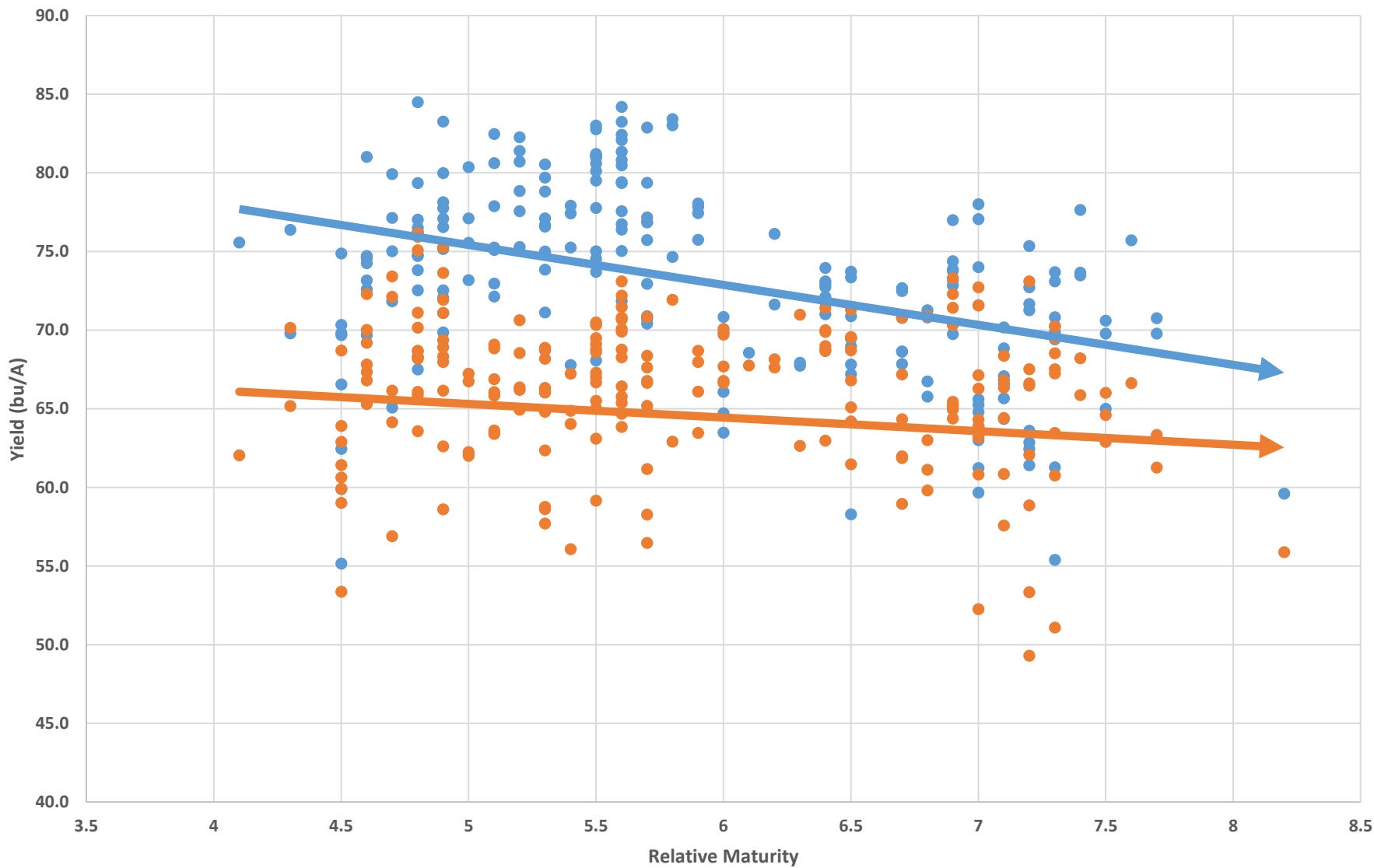
Plant earlier maturities – especially indeterminate varieties

- Indeterminate varieties flower for a longer period of time, and continue vegetative growth during flowering
- **Full Season:** MG4 Indeterminate varieties
- **Double crop:** MG5-MG6 with options between Indeterminate and Determinate growth types

Plant a range of maturities to minimize risk

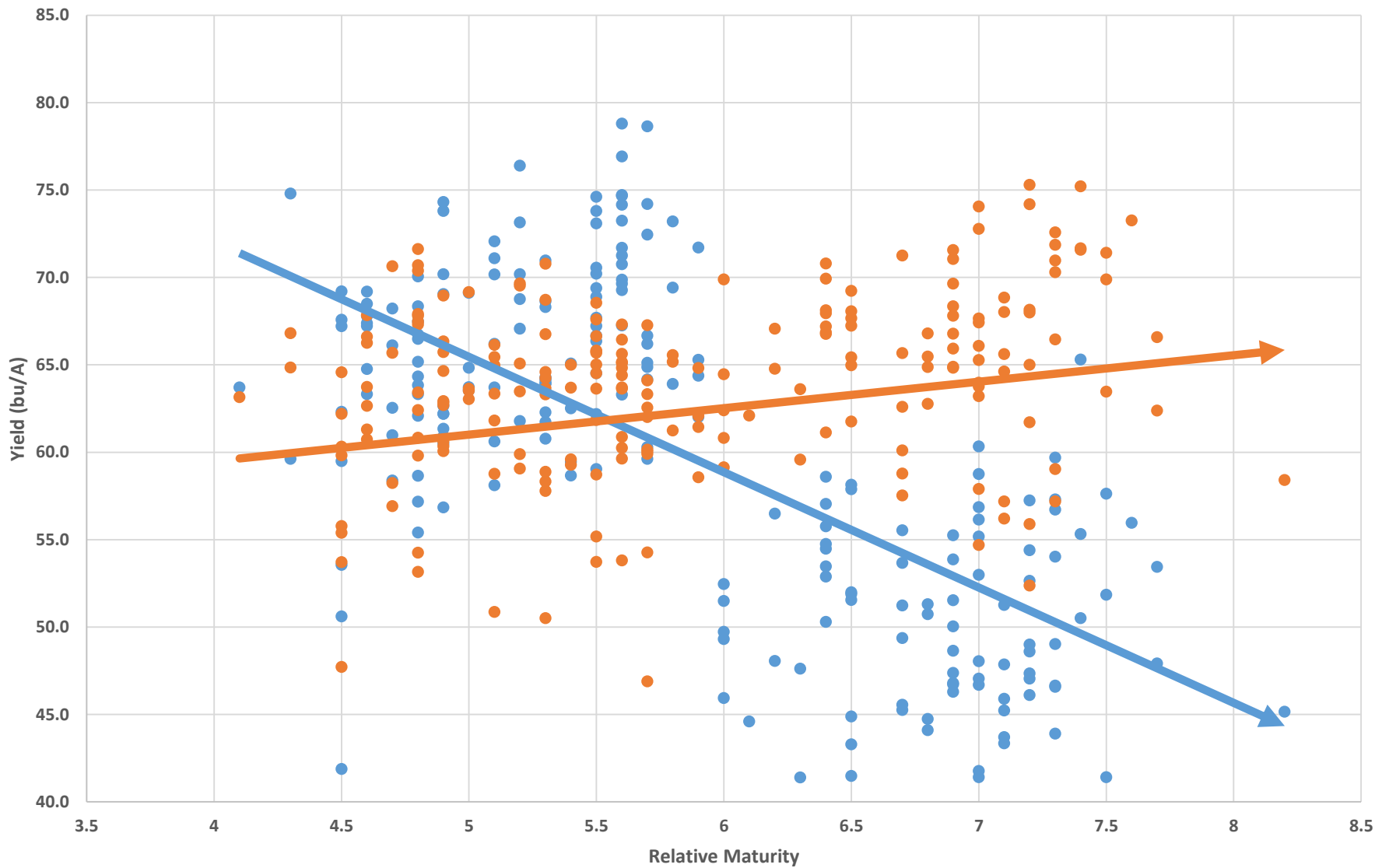
- Within one full maturity group of your early variety
- Spreads out risk: Hot/dry weather during flowering or Wet weather during harvest

Statewide (2017)



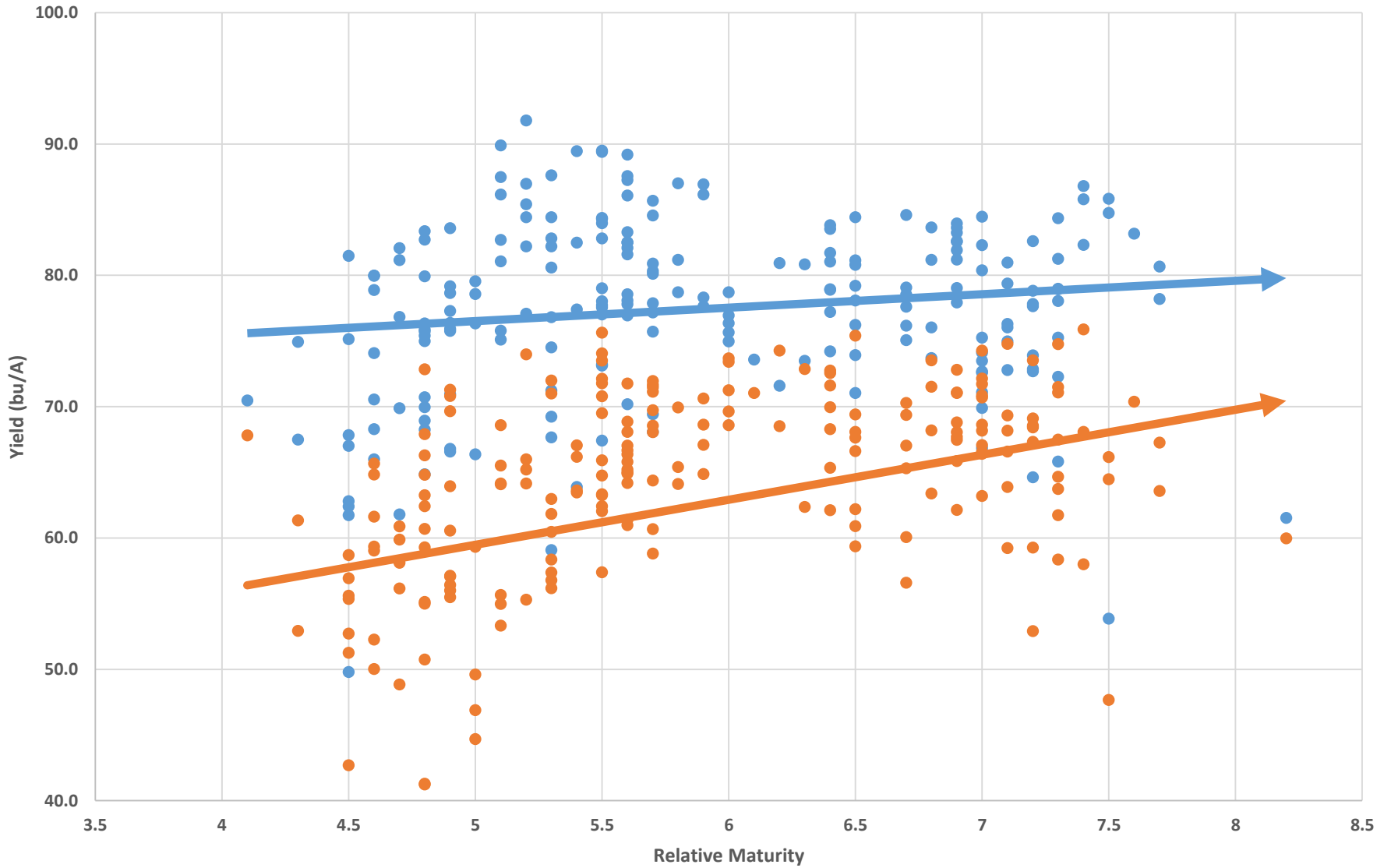
● Full Season ● Double crop ➡ Linear (Full Season) ➡ Linear (Double crop)

Beaufort (2017)



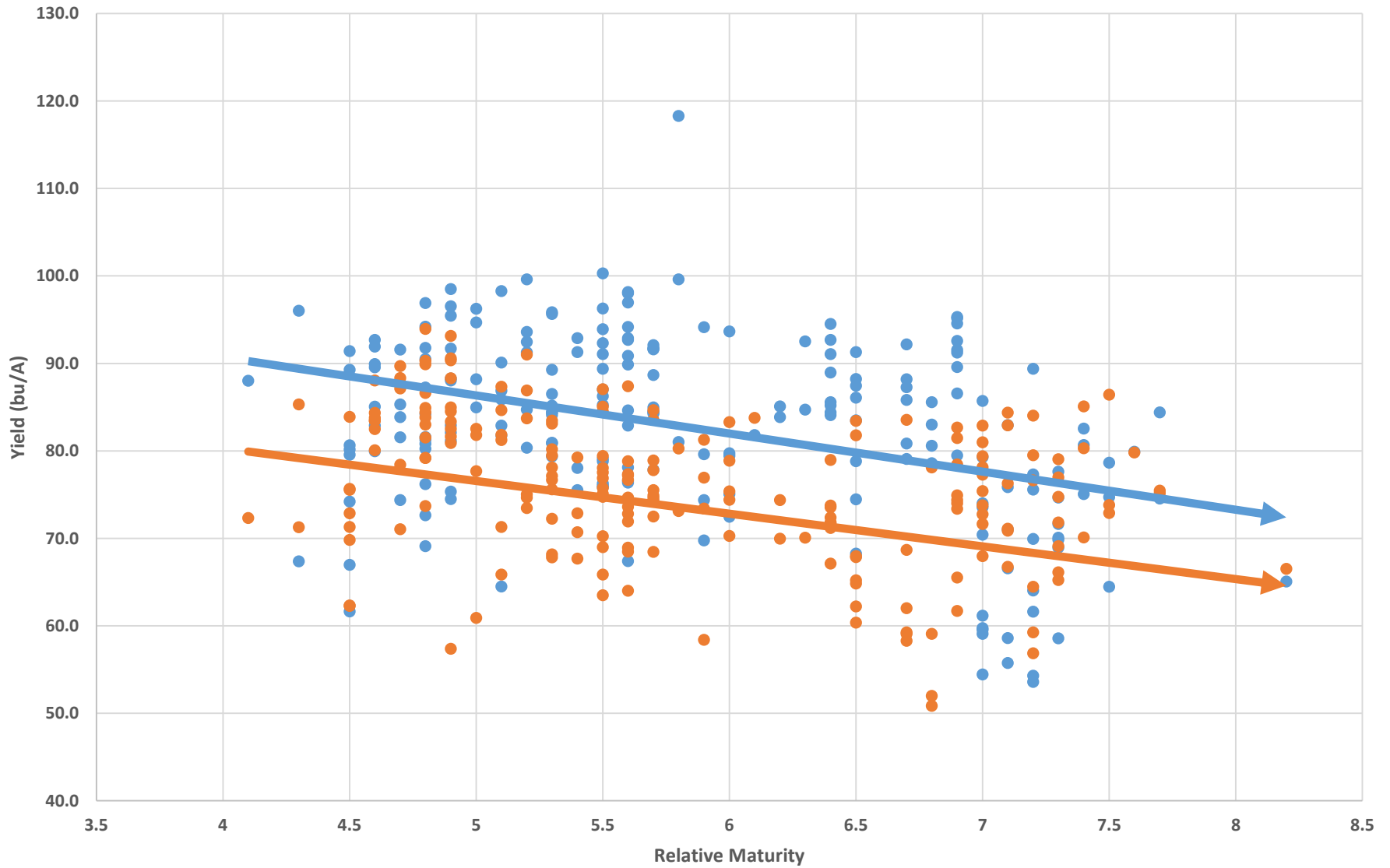
● Full Season ● Double crop ➔ Linear (Full Season) ➔ Linear (Double crop)

Greene (2017)



● Full Season ● Double crop ➔ Linear (Full Season) ➔ Linear (Double crop)

Rowan



● Full Season ● Double crop ➔ Linear (Full Season) ➔ Linear (Double crop)



- Small Grains
- Soybeans
- Soybean Variety Selection Tool
- Sorghum
- Cotton Variety Calculator
- Departments
Crop & Soil Sciences, Entomology & Plant Pathology
- Other Variety Trial Programs
Alabama, Arkansas, Georgia ...
- Related Links
NC Crop Improvement Association, SCC-33 National Crop Variety Testing Group, University Crop Testing Alliance
- Publications & Factsheets

[Home](#) » [MG5 Early Statewide – 2017](#)

MG5 Early Statewide – 2017

[PDF](#)

Company/Brand	Trait	Variety	FULL SEASON		DOUBLE CROP	
			Yield (bu/A)	Height (in)	Yield (bu/A)	Height (in)
Pioneer	RR	P55T81R	83.0*	37.8	67.0	28.6
Pioneer	Xtend	P55A49X	82.8	36.7	69.5	27.6
Bayer	LL	CZ 5147 LL	82.5	36.0	63.6	27.3
Dyna-Gro	RR2/STS	S52RS86	82.3	37.9	74.4*	30.3
Southern Harvest	LL	SH 5215 LL	81.4	38.0	70.6	28.6
Stine	RR2	ST 55R102	81.2	36.4	70.5	28.8
Armor	RR2	55-R68	81.1	36.6	70.3	28.4
UniSouth Genetics	Conv	USG Ellis	81.0	36.2	67.3	28.3
Southern Harvest	LL	SH 5515 LL	81.0	39.1	68.6	28.1
Pioneer	RR	P52A26R	80.7	37.5	66.4	29.1
Bayer	LL	CZ 5150 LL	80.6	37.5	66.1	29.6

- TWEET THIS PAGE
- SHARE ON FACEBOOK
- EMAIL THIS ARTICLE

PRINT THIS ARTICLE

- YOU MIGHT ALSO LIKE**
- [MG5 Early Greene - 2017](#) — Official Variety Testing
 - [MG5 Early Beaufort - 2017](#) — Official Variety Testing
 - [MG5 Early Rowan - 2017](#) — Official Variety Testing
 - [MG5 Early Pasquotank - 2017](#) — Official Variety Testing
 - [MG5 Early Sampson - 2017](#) — Official Variety Testing
 - [MG5 Early Statewide - 2 Year](#) — Official Variety Testing



Tweets from @NCOVT

Tweets by @NCOVT

NC OVT Program @NCOVT

MG4 Location Summary - Full Season - 2017

			STATEWIDE	Beaufort	Greene	Pasquotank	Rowan	Sampson
Company/Brand	Trait	Variety	Yield (bu/A)	Yield (bu/A)	Yield (bu/A)	Yield (bu/A)	Yield (bu/A)	Yield (bu/A)
Asgrow	Xtend	AG48X7	84.5*	68.4	83.4	86.8*	94.2	78.1
Asgrow	Xtend	AG49X6	83.3	69.1	83.6*	81.6	91.7	83.5
Dyna-Gro	Xtend/STS	S46XS87	81.0	63.3	78.9	82.3	89.9	78.5
Progeny	LL	P 4930 LL	80.0	62.7	77.3	77.7	98.5*	81.4
UniSouth Genetics	Xtend/STS	USG 7478XTS	79.9	66.1	82.1	74.9	83.9	87.2
Armor	Xtend	ARX4807	79.4	65.2	79.9	75.6	80.8	86.3
Stine	LL	ST 49LD02	78.1	60.5	76.3	75.2	88.3	83.5
Progeny	Xtend/STS	P 4929 RXS	77.8	60.9	79.2	73.1	88.1	83.6
Progeny	RR2	P 4757 RY	77.1	68.2	76.8	70.4	91.6	83.9
UniSouth Genetics	RR2/STS	USG 74K95RS	77.1	56.8	75.8	75.7	96.5	76.5
Stine	RR2	ST 48RI23	77.0	67.5	70.7	71.8	96.9	83.8
Bayer	LL	CZ 4938 LL	76.6	61.4	78.7	69.8	82.9	87.1
Southern Harvest	LL	SH 4817 LL	76.5	70.1	82.7	70.0	91.8	76.3
Dyna-Gro	Xtend/STS	S43XS27	76.4	74.8*	74.9	68.6	96.0	81.3
Dyna-Gro	Xtend/STS	S48XS78	76.2	66.7	75.0	73.1	84.2	79.1
Doebler's	RR	48R8	76.2	66.5	75.7	71.7	80.2	82.8
UniSouth Genetics	Xtend/STS	USG 7487XTS	76.0	57.2	76.4	76.0	87.3	73.8
(Public)	Conv	V14-4140	75.6	63.7	70.5	66.4	88.0	93.3*
Terral	RR	REV 49R94	75.2	73.8	71.0	66.5	95.4	83.7
Progeny	LL	P 4716 LL	75.0	62.5	81.2	71.8	85.3	72.5
Progeny	Xtend/STS	P 4516 RXS	74.9	69.2	81.5	68.7	80.7	76.9
MorSoy	Xtend	MS 4846 RXT	74.8	63.3	75.4	73.0	81.6	74.7
Pioneer	RR	P46A16R	74.7	69.2	80.0	67.7	89.6	76.1
Armor	Xtend	48-D24	74.7	62.1	70.0	74.7	81.3	75.9

Traits

- Conventional
 - NC-Dunphy
 - USG Ellis
 - NC-Wilder
 - N7003CN

- RR1/RR2 (*Glyphosate*)
 - 56R8
 - P55T81R
 - REV 55A67
 - **S58RY78**
 - **55-R68**
 - USG75B75R
 - **S74-M3**
 - P76T54R2
 - **S52RS86**
 - **S58-Z4**



Traits

- LibertyLink (*Glufosinate*)
 - CZ 5147 LL
 - **SH 5215 LL**
 - CZ 5150 LL
 - **P4930 LL**
 - ST 52LI20
 - SH 4817 LL
 - P 6315 LL
 - CZ 6515 LL
 - **USG 76G45LS**



Traits

- Xtend (*Dicamba + Glyphosate*)
 - **S48SX78**
 - **AG48X7**
 - **AG49X6**
 - P 5688 RX
 - **57-D77**
 - P55A49X
 - **MS 5607 RXT**
 - **S56XT98**
 - P 5376 RX
 - **MS 7057 RXT**
 - **P 7082 RX**
 - USG 7698XT
 - TS6289R2X
 - SG 6985XT
 - AG64X8
 - USG 7697XT
 - S64XT18
 - AG72X7



Upcoming Traits

- Enlist E3 (**Waiting on export approval**)
 - 2,4-D + Glyphosate + Glufosinate
- Balance GT (GT27) (**Waiting on herbicide approval**)
 - Glyphosate + New Group 27/HPPD herbicide
- LibertyLink GT27 (**Waiting on herbicide approval**)
 - Glufosinate + Glyphosate + New Group 27/HPPD herbicide

Resistances

- Nematode
 - RKN
 - SCN
- Disease
 - Frog-eye Leaf Spot
 - Phytophthora Root Rot
 - Sudden Death Syndrome (SDS)
- Misc
 - Green stem
 - Chloride excluder
 - Metribuzin tolerance
 - STS tolerance

Pasquotank Soybeans (2018)

Full Season

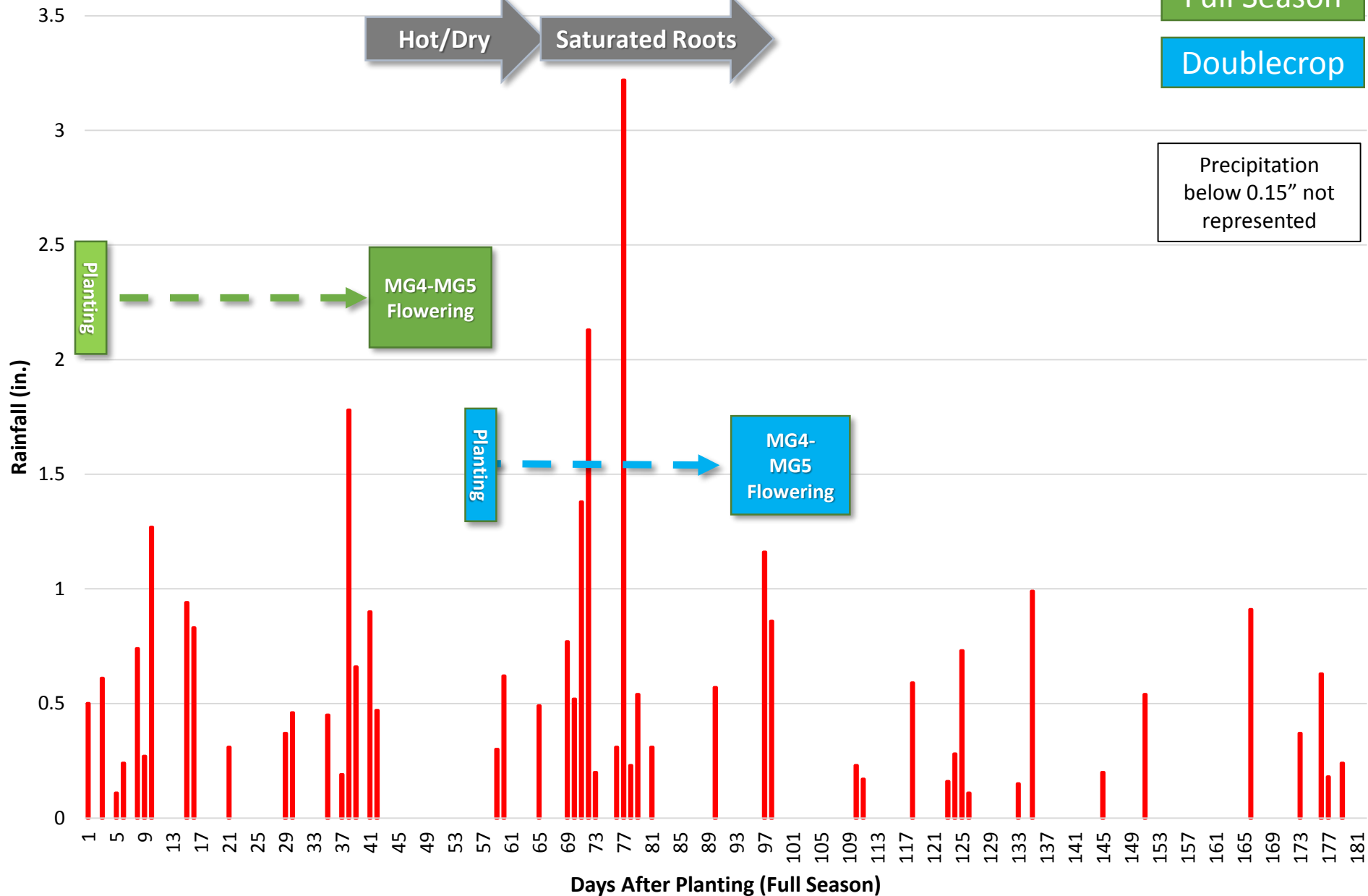
Doublecrop

Precipitation
below 0.15" not
represented

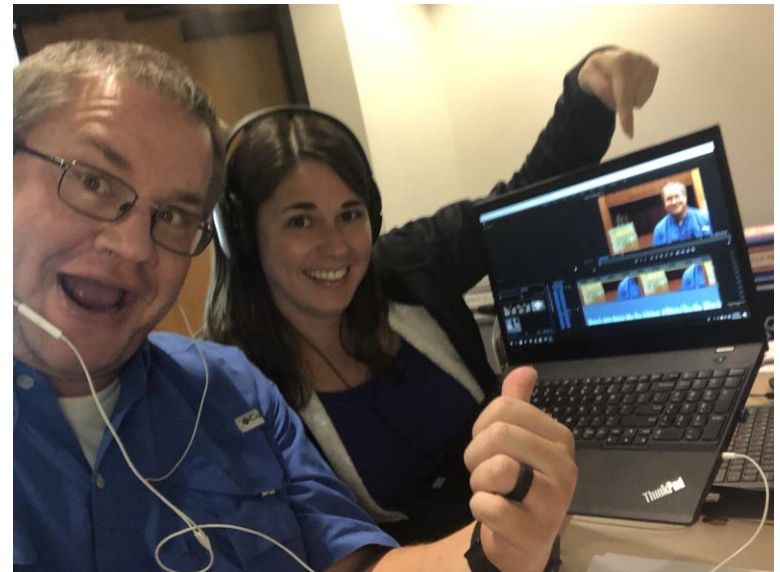
Hot/Dry → Saturated Roots

Planting → MG4-MG5 Flowering

Planting → MG4-MG5 Flowering



Questions?



Ryan Heiniger
rwheinig@ncsu.edu
(919) 389-8860
Twitter: @NCOVT
Website: www.ncovt.com