

Weed Identification

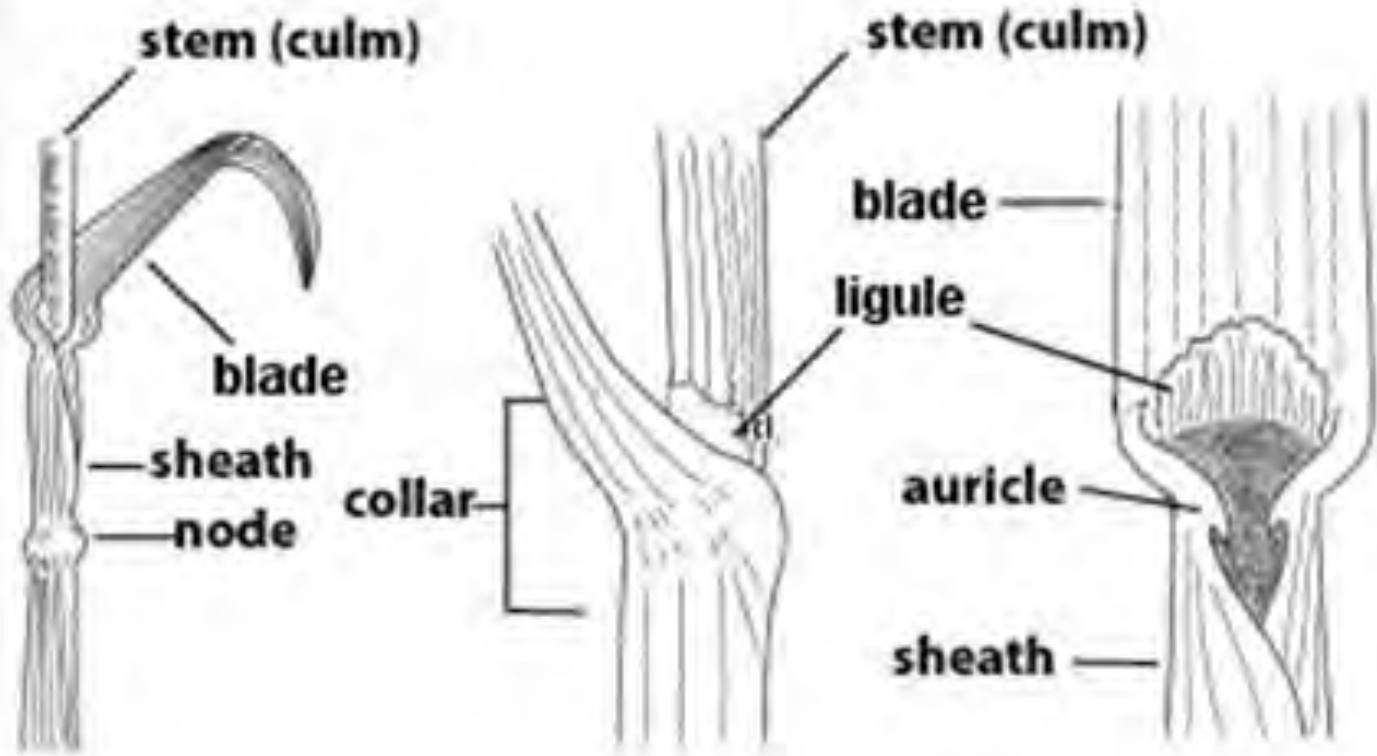


Fike Teaching Garden

July 11, 2017



Identifying Grass (Monocot) Species



Plant Parts: Ligule

- Membrane or fringe of hair above the leaf collar on a grass plant

Membranous



Large crabgrass

Truncate



Goosegrass

Fringe of hairs



Bermudagrass

Absent



Barnyardgrass

Plant Parts: Auricle

- An ear-lobe shaped projection growing from the base of the sheath at the collar region of some grasses

Claw-like



Quackgrass

Rounded



Tall fescue

Absent



Giant foxtail

Plant Parts: Sheath

- The lower part of the leaf that surrounds the stem (culm) of the grass plant

Split



Fall
Panicum

Overlap



Large crabgrass

Fused



Smooth brome

Plant Parts: Vernation

- The arrangement of the youngest leaf in the bud shoot



Plant Parts: Stems



round



elliptical



flat

Plant Parts: Seedheads

Spike

Main axis does not branch.

Spikelets are stalkless.



Italian ryegrass

Raceme

Main axis does not branch.

Spikelets are stalked



Dallisgrass

Plant Parts: Seedheads

Panicle

Main axis branches.
Spikelets are stalked.



Barnyardgrass



Johnsongrass

Plant Parts: Specialized Stems



Rhizome

below ground specialized
stems

Johnsongrass



Stolon

above ground specialized
stems

Bermudagrass

CS 152 Grass Chart

	Ligule	Collar Hair	Leaf Hair	Comments
(1) broadleaf signalgrass	H	Short	Total	Hair on bottom leaf only when young – large seed
(2) large crabgrass	M	Short	Total	Easy ligule to see, complete hair
(3) crowfootgrass	M	Short	Total	Distinct seed pods, evenly spaced hairs along margin
(4) goosegrass	M	Long	None	Folded leaf, often has silvery appearance
(5) barnyardgrass	None	Rare	None	No Ligule
(6) fall panicum	M/H	Short	1 st leaf	Tall hairy ligules
(7) Texas panicum	H	Short	Total	Lots of hair, persistent seed (large)
(8) dallisgrass	M	Short	Total	Much like crabgrass
(9) giant foxtail	H	Short	total	Short hairs to end of leaf – all hair
(10) yellow foxtail	H	Long	Long	Leaf hair on 3 rd of leaf surface
(11) green foxtail	H	Rare	None	No hairs on leaves
(12) johnsongrass	M	Long	Sparse	Looks similar to corn seedling
(13) annual bluegrass	M	None	None	Boat shaped leaf tip
(14) Italian ryegrass	M	Rare	None	Auricles present except on very young seedlings

Using Our Knowledge of Plant Parts to Make an ID

Large Crabgrass



Goosegrass



A close-up photograph of a green grass stem and leaf. The stem is vertical and shows a distinct node where a leaf is attached. The leaf is broad and green, with visible veins. The background is a soft, out-of-focus green.

Grass and Grass-like Weeds

Yellow nutsedge

Cyperus esculentus

Yellow nutsedge

Cyperus esculentus



Yellow nutsedge

Cyperus esculentus



Purple nutsedge

Cyperus rotundus



Smooth crabgrass

Digitaria ischaemum



Large crabgrass

Digitaria sanguinalis

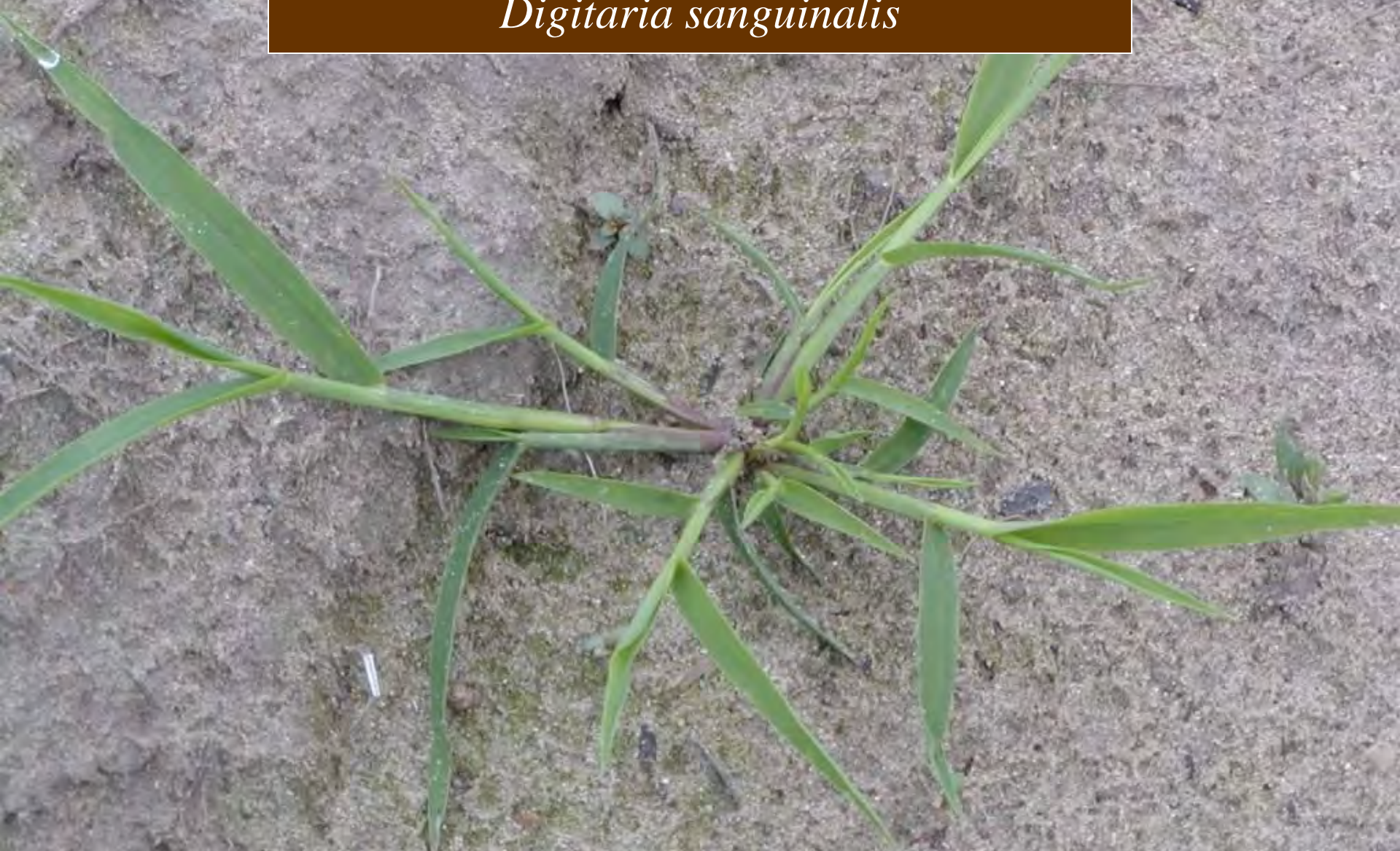


Large crabgrass

Digitaria sanguinalis

Large crabgrass

Digitaria sanguinalis



Large crabgrass

Digitaria sanguinalis



Large crabgrass

Digitaria sanguinalis



Barnyardgrass

Echinochloa crus-galli

Barnyardgrass

Echinochloa crus-galli

Barnyardgrass

Echinochloa crus-galli



Barnyardgrass

Echinochloa crus-galli



Goosegrass

Eleusine indica



Fall panicum

Panicum dichotomiflorum

Fall panicum

Panicum dichotomiflorum

Fall panicum

Panicum dichotomiflorum



Texas panicum

Urochloa texanum



Texas panicum

Urochloa texanum



Annual bluegrass

Poa annua



Annual bluegrass

Poa annua



Giant foxtail

Setaria faberi



Giant foxtail

Setaria faberi



Giant foxtail

Setaria faberi



Yellow foxtail

Setaria pumila

Yellow foxtail

Setaria pumila



Yellow foxtail

Setaria pumila



Green foxtail

Setaria viridis



Green foxtail

Setaria viridis



Y



GT



GN



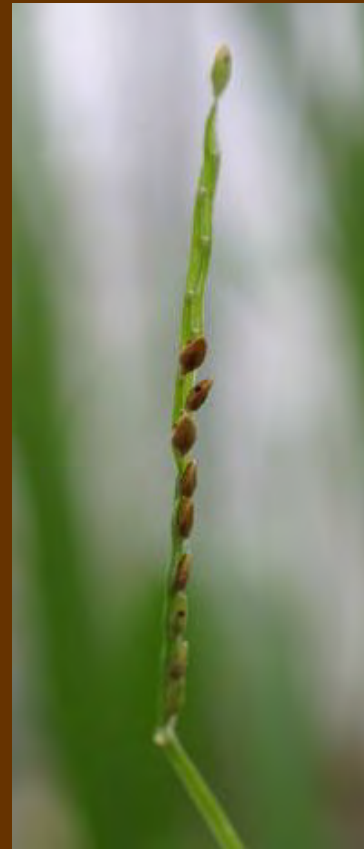
Broadleaf signalgrass

Urochloa platyphylla

Virginia Tech Weed ID

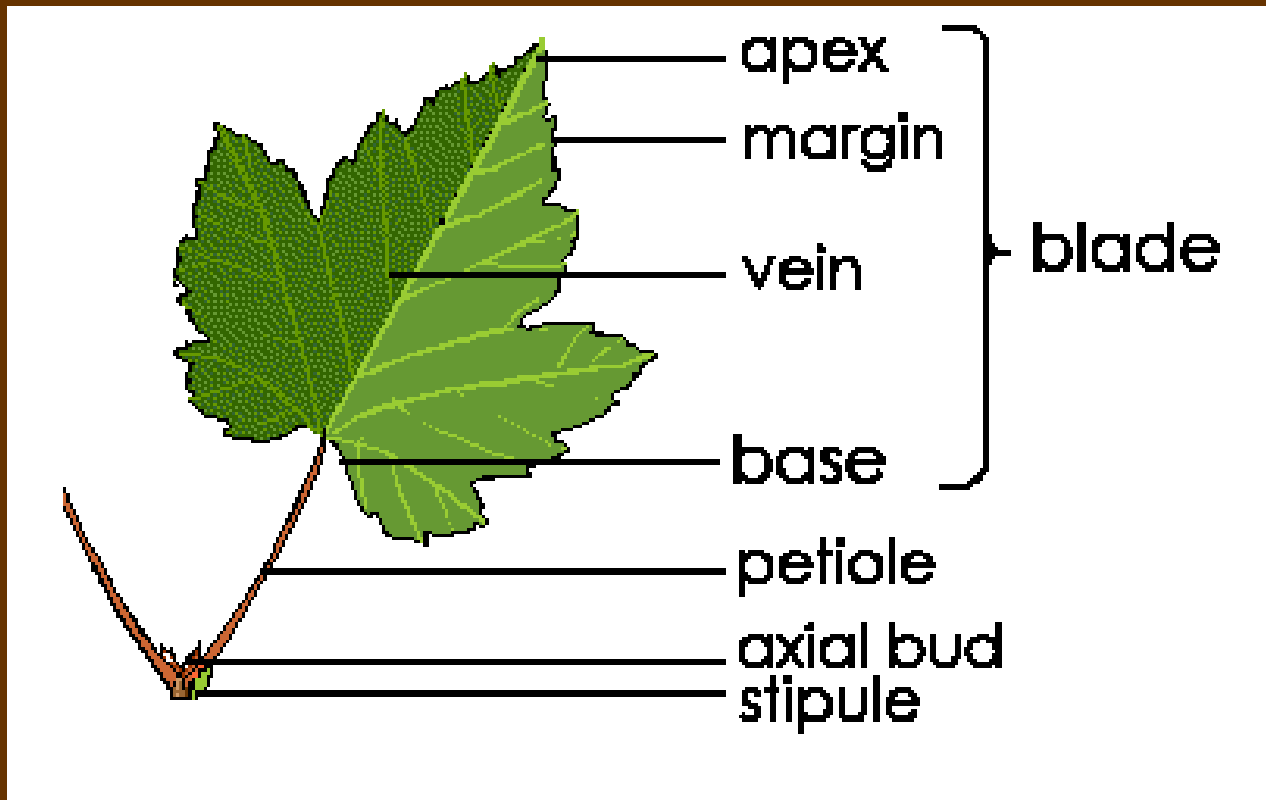


Virginia Tech Weed ID Guide



Identifying Broadleaf (Dicot) Weeds

Leaf Parts



Plant Parts: Arrangement of leaves on the stem

Opposite



Poorjoe

Whorled



Carpetweed

Alternate



Arrowleaf sida

Plant Parts: Leaf Structure

Simple or sessile
leaf without petiole



Bristly starbur

Palmately compound



Giant ragweed

Pinnately compound



Sicklepod

Biternate



Balloonvine

Plant Parts: Leaf Shape-1

Cordate

(heart-shaped)



Tall morningglory

Lanceolate

(lance-shaped)



Eclipta

Lyrate



Wild radish

Plant Parts: Leaf Shape-2

Sagittate



Common arrowweed

Reniform

(kidney-shaped)



Ground ivy

Ovate



Palmer amaranth

Plant Parts: Leaf Shape-3

Linear



Poorjoe

Oblanceol



Bracted plantain

Runcinate

(lacerated aspect with the projection pointing away from the apex)



Dandelion



Broadleaf Weeds

Palmer amaranth

Amaranthus palmeri



Palmer amaranth



Palmer amaranth



Redroot pigweed

Amaranthus retroflexus



Redroot pigweed



Redroot pigweed



Redroot pigweed



Redroot pigweed

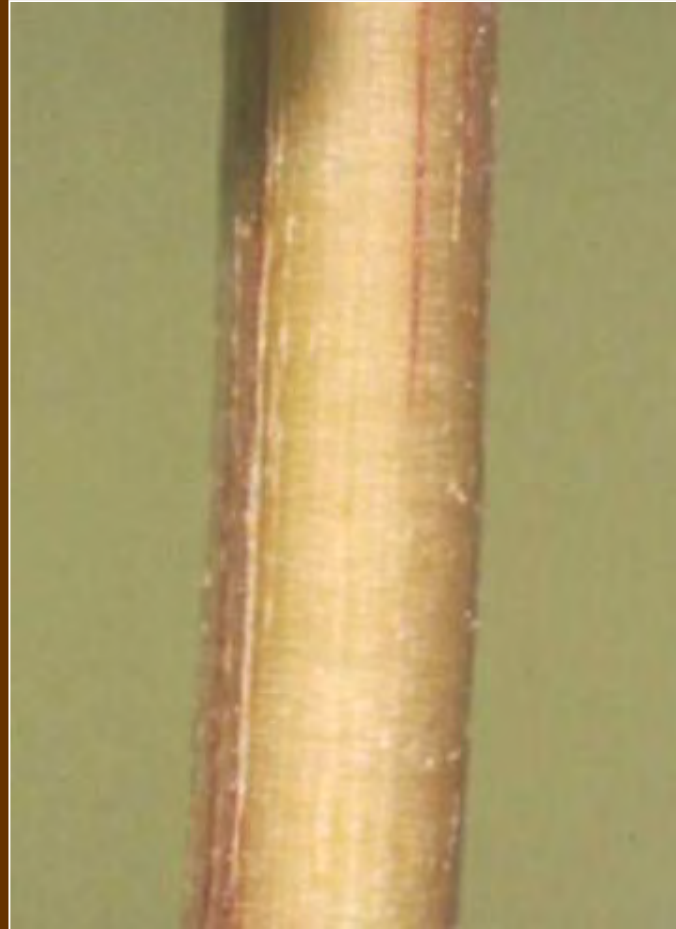


Common waterhemp

Amaranthus rudis



Common waterhemp



Common waterhemp



Common waterhemp



Common waterhemp



Common waterhemp



Common ragweed

Ambrosia artemisiifolia



Common ragweed



Common ragweed



Common ragweed



Common ragweed



Horseweed

Conyza canadensis



Horseweed



Horseweed



Horseweed



Horseweed



Horseweed



Horseweed



Common cocklebur

Xanthium strumarium



Common cocklebur



Common cocklebur



Common cocklebur



Common cocklebur



Common lambsquarters

Chenopodium album



Common lambsquarters



Common lambsquarters



Common lambsquarters



Common lambsquarters



Common lambsquarters



Red morningglory

Ipomoea hederifolia L



© USC Herbarium Photo by Linda Lee

Red morningglory



Ivyleaf morningglory

Ipomoea hederacea



Ivyleaf morningglory



Pitted morningglory

Ipomoea lacunosa



Pitted morningglory



Tall morningglory

Ipomoea purpurea



Tall morningglory



Tall morningglory



Cypressvine morningglory

Ipomoea quamoclit L

Virginia Tech Weed ID Guide



Cypressvine morningglory



Palmleaf morningglory



Virginia Tech Weed ID Guide

Palmleaf morningglory

Virginia Tech Weed ID Guide



Virginia Tech Weed ID Guide



Smallflower morningglory



Smallflower morningglory



© Ted Bodner



Tropic croton



Tropic croton



Velvetleaf



Velvetleaf



Velvetleaf



Velvetleaf





Sicklepod

Senna obtusifolia

Sicklepod

Senna obtusifolia



Jimsonweed

Datura stramonium



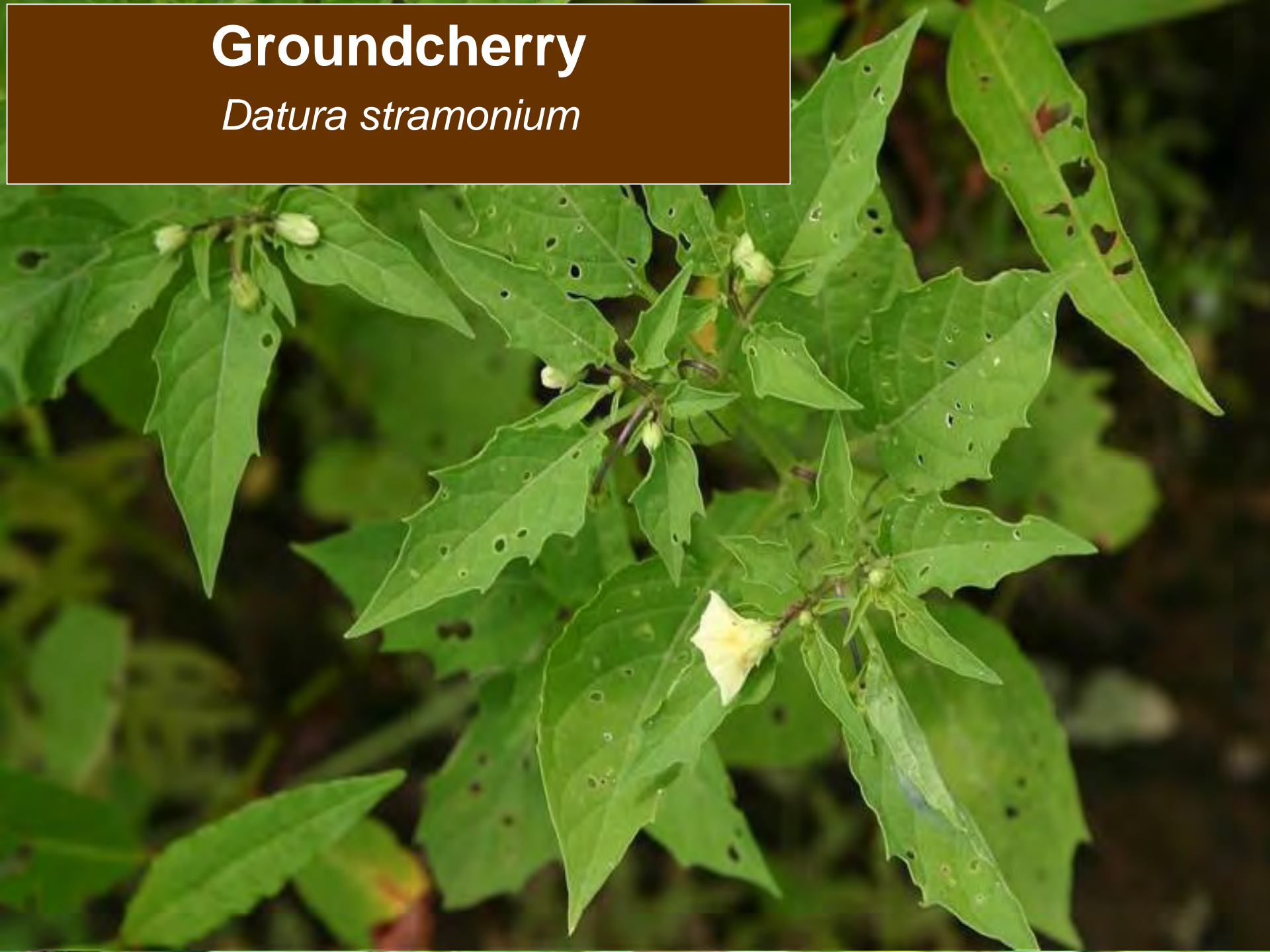
Jimsonweed

Datura stramonium



Groundcherry

Datura stramonium



Groundcherry

Datura stramonium



© Nancy J. Ondra/Hayefield.com



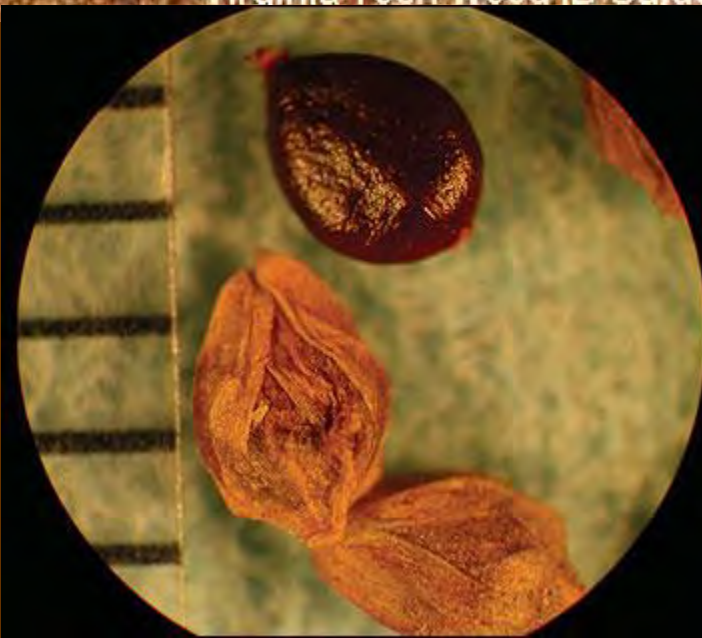
Ladysthumb

Polygonum persicaria





Ladysthumb
Polygonum persicaria



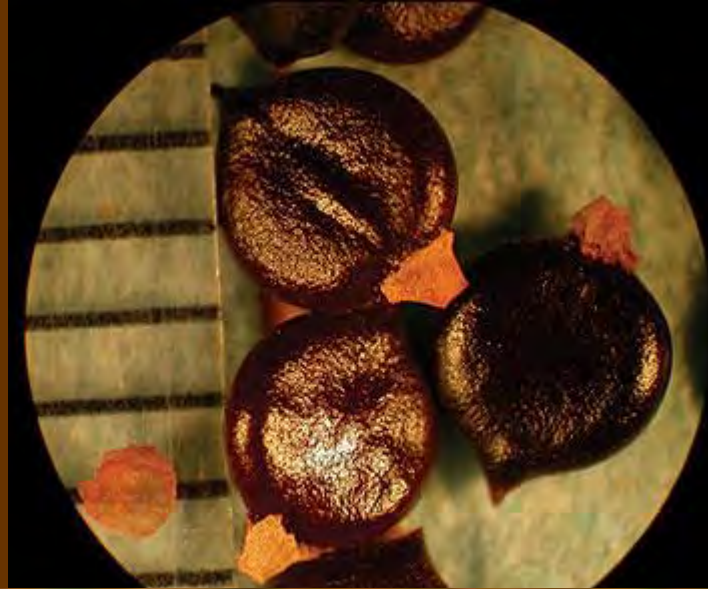
Pennsylvania smartweed

Polygonum persicaria



Pennsylvania smartweed

Polygonum pensylvanicum



Ladysthumb



Pennsylvania smartweed



I've been thinking...

I'm the **MAN** of this house, so starting tomorrow I want you to have a hot, delicious meal ready for me the second I walk thru that door...

Afterwards, while watching ESPN and relaxing in my chair, you'll bring me my slippers and then run my bath... And when I'm done with my bath, guess who's going to dress me and comb my hair?

The funeral director.

