

Soybean Variety Selection

Ryan Heiniger
Director - NCOVT

Things to consider...

1. Maturity Group
 - Yield Potential
 - Planting Date
2. Herbicide trait
3. Nematode and Disease resistance
4. Height/Lodging potential
5. Appearance

Maturity Group

Plant early

- More vegetative growth and node development prior to flowering
- **Full Season:** Late April
- **Double crop:** Immediately after wheat harvest

Plant earlier maturities – especially indeterminate varieties

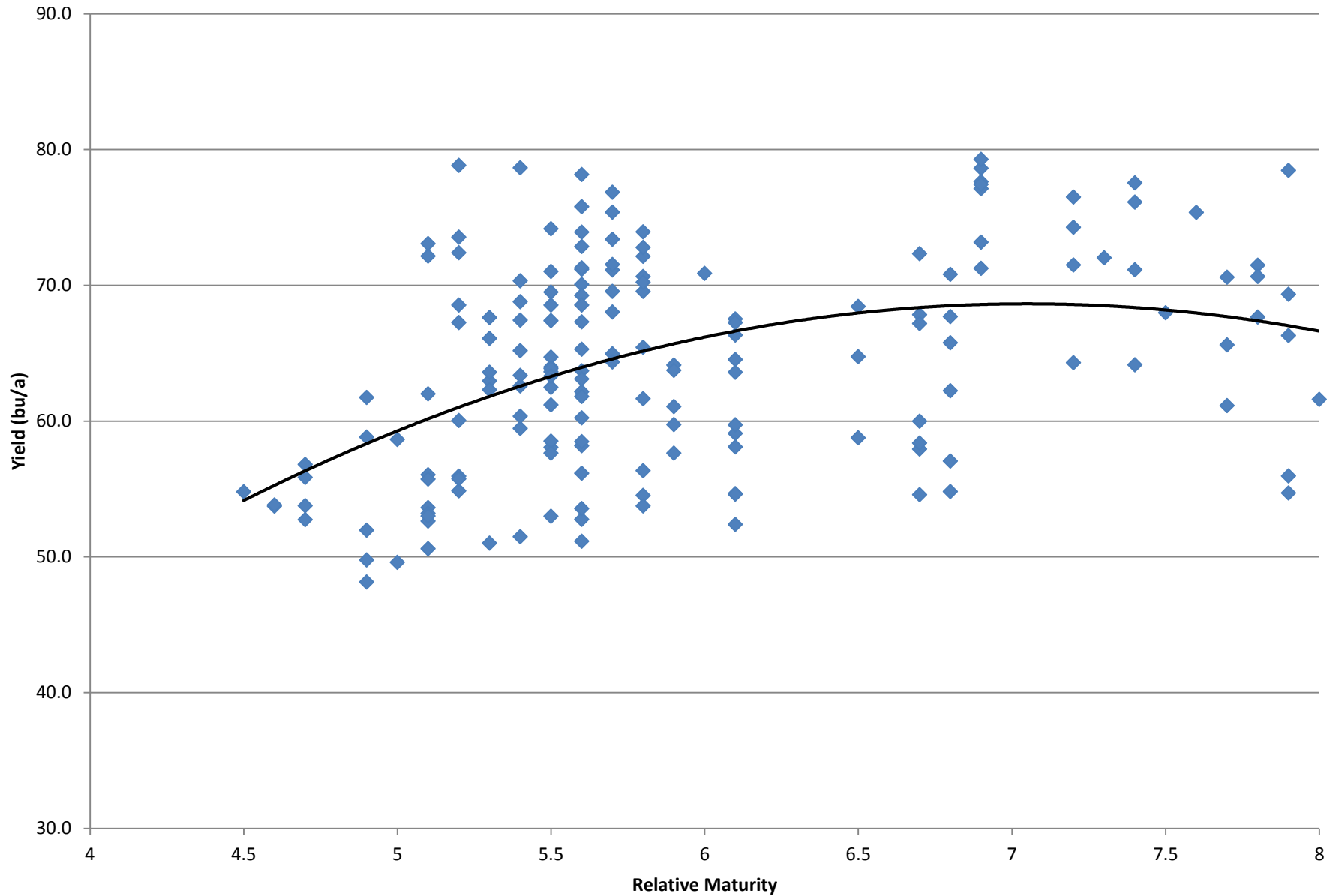
- Indeterminate varieties flower for a longer period of time, and continue vegetative growth during flowering
- **Full Season:** MG4 Indeterminate varieties
- **Double crop:** MG5-MG6 with options between Indeterminate and Determinate growth types

Plant a range of maturities to minimize risk

- Within one full maturity group of your early variety
- Spreads out risk: Hot/dry weather during flowering or Wet weather during harvest

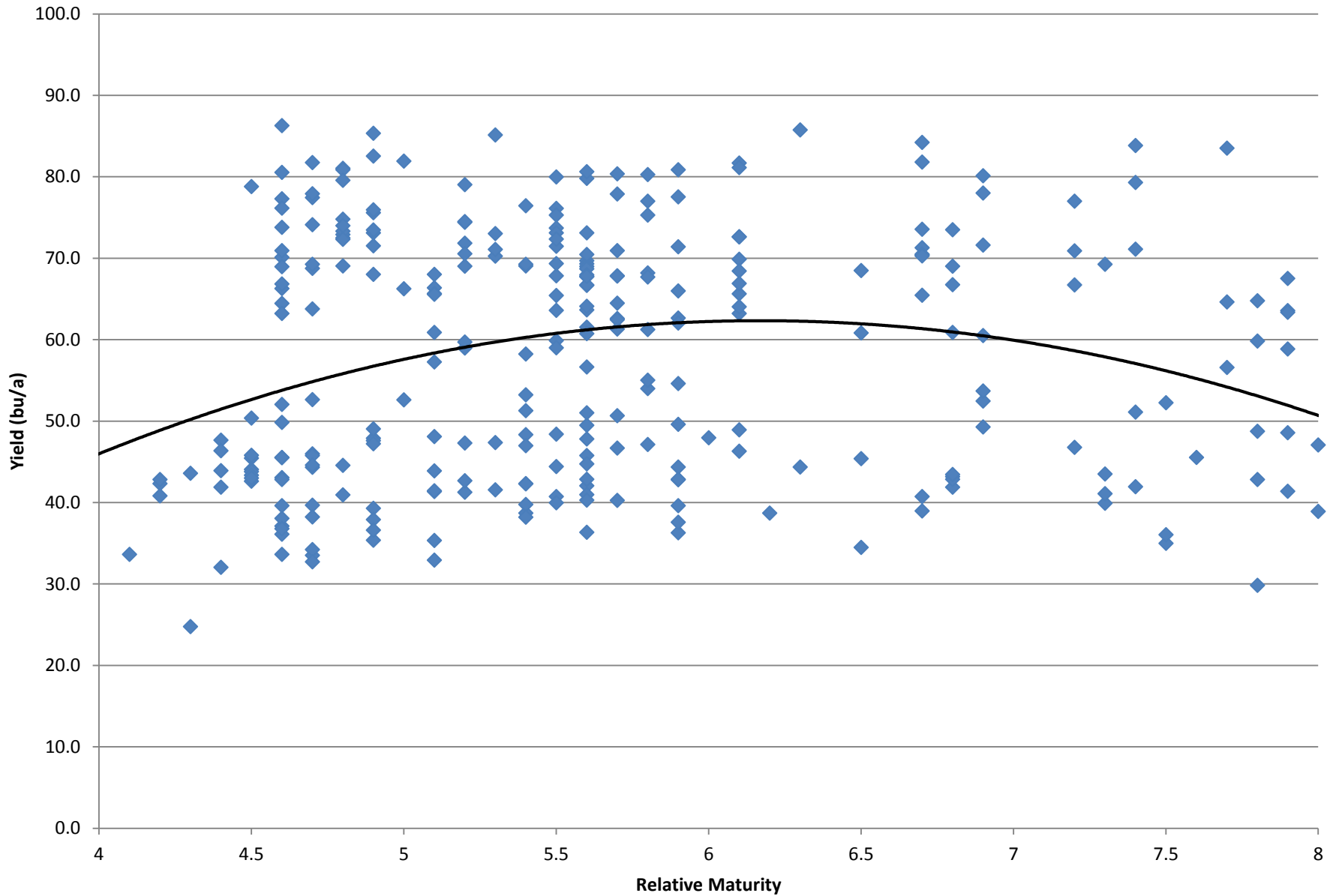
Average Planting Date: May 28th

Dillon, SC (4 year)

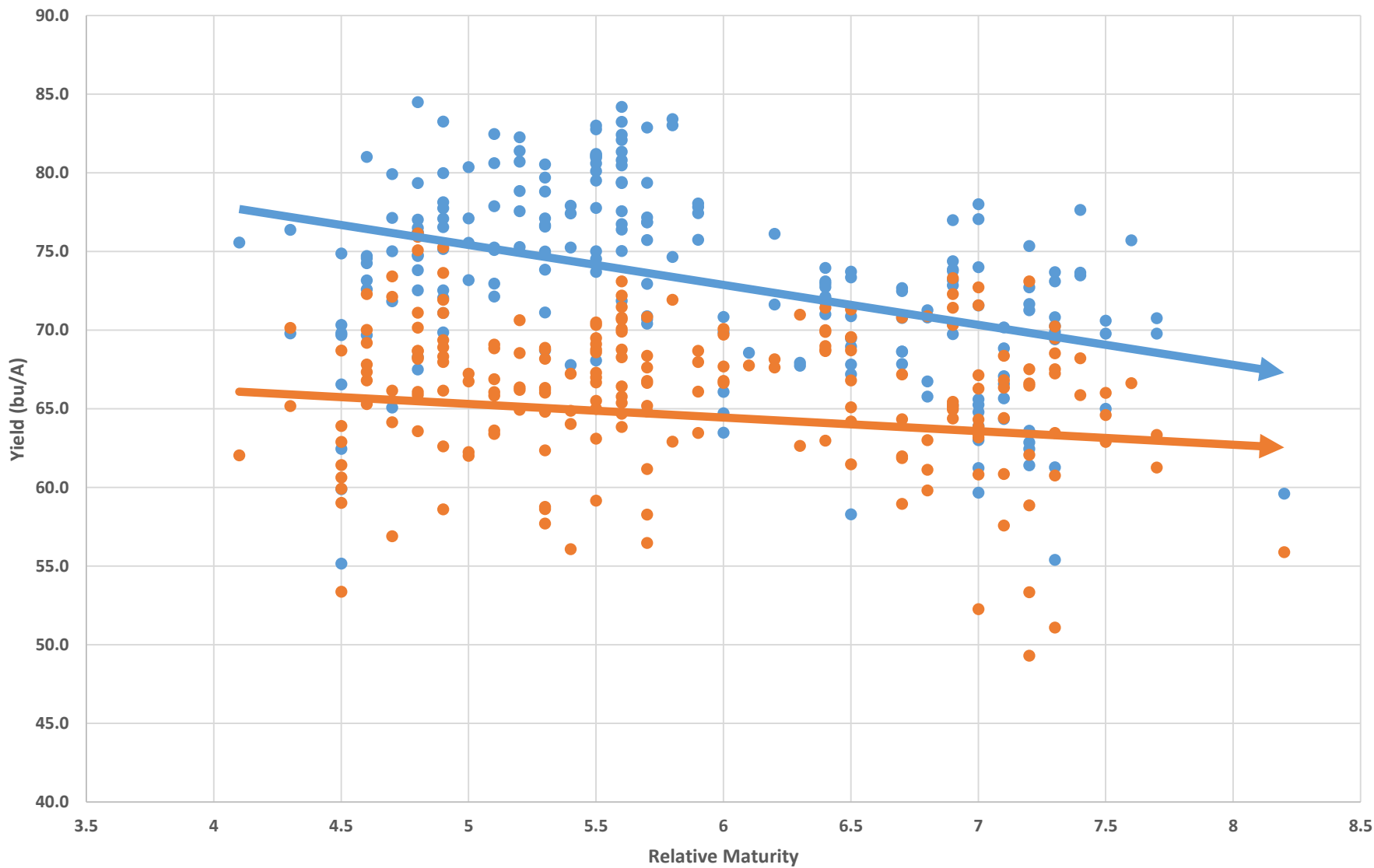


Average Planting Date: June 21st

Pantego Doublecrop (5 year)

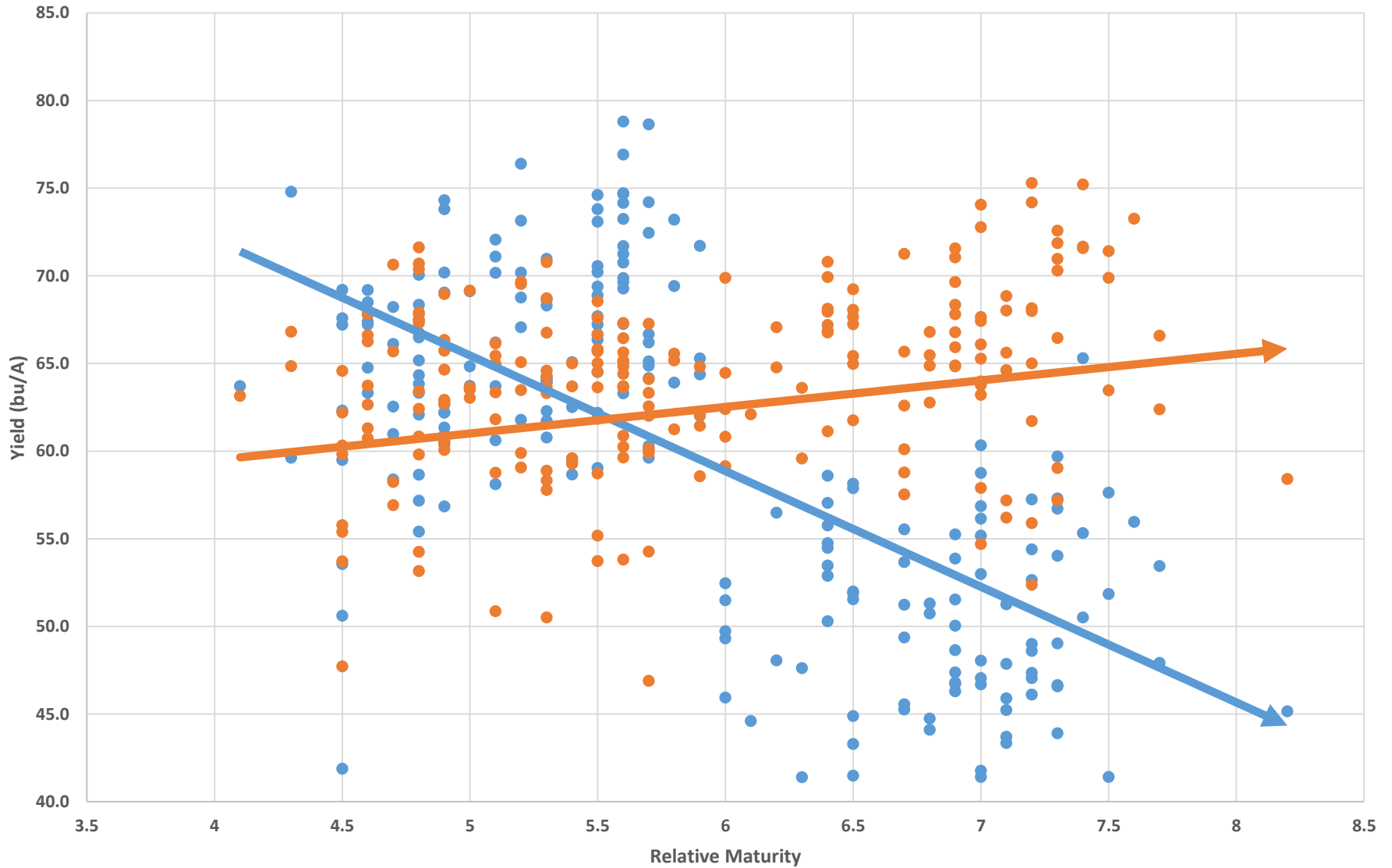


Statewide (2017)



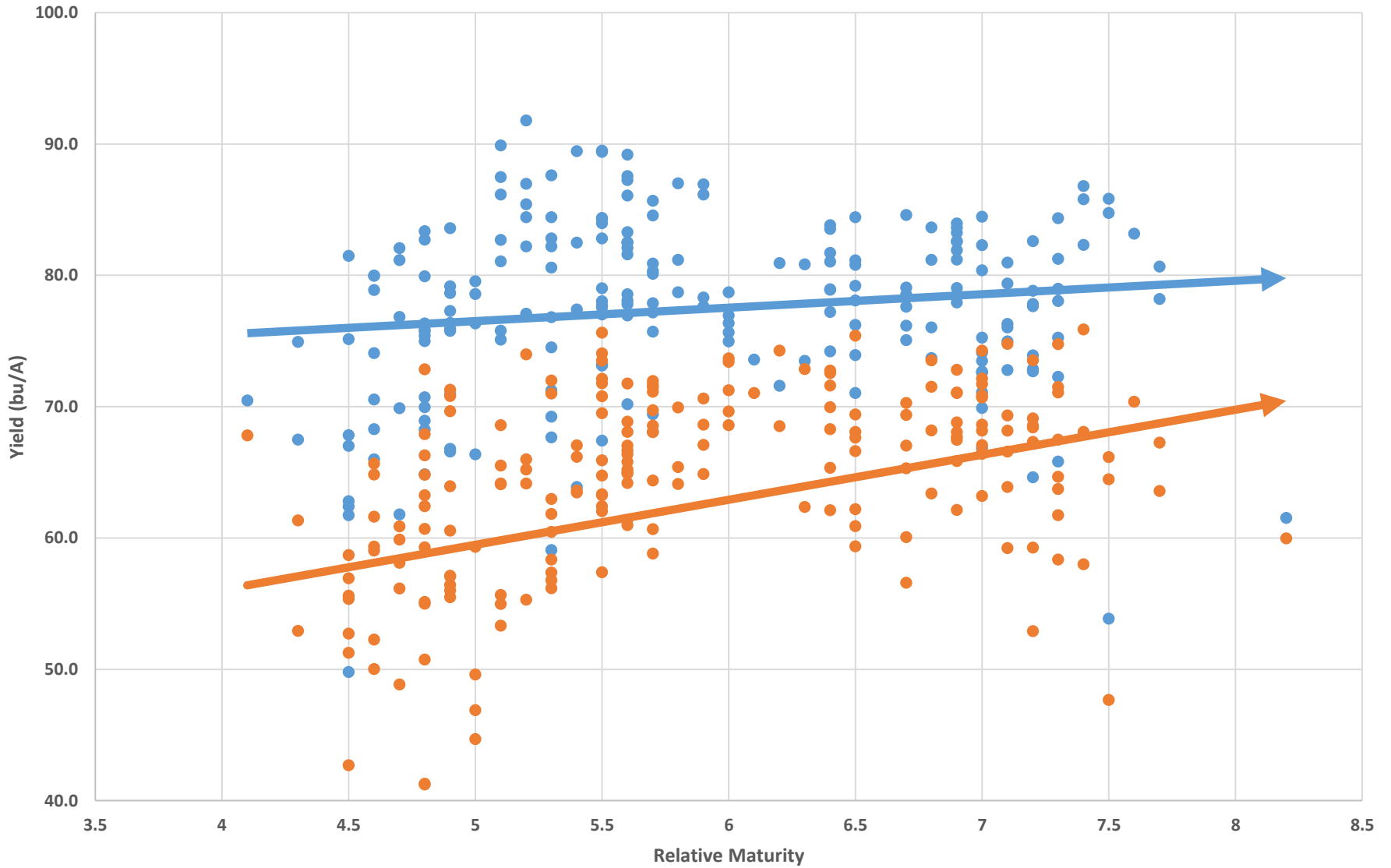
● Full Season ● Double crop ➡ Linear (Full Season) ➡ Linear (Double crop)

Beaufort (2017)



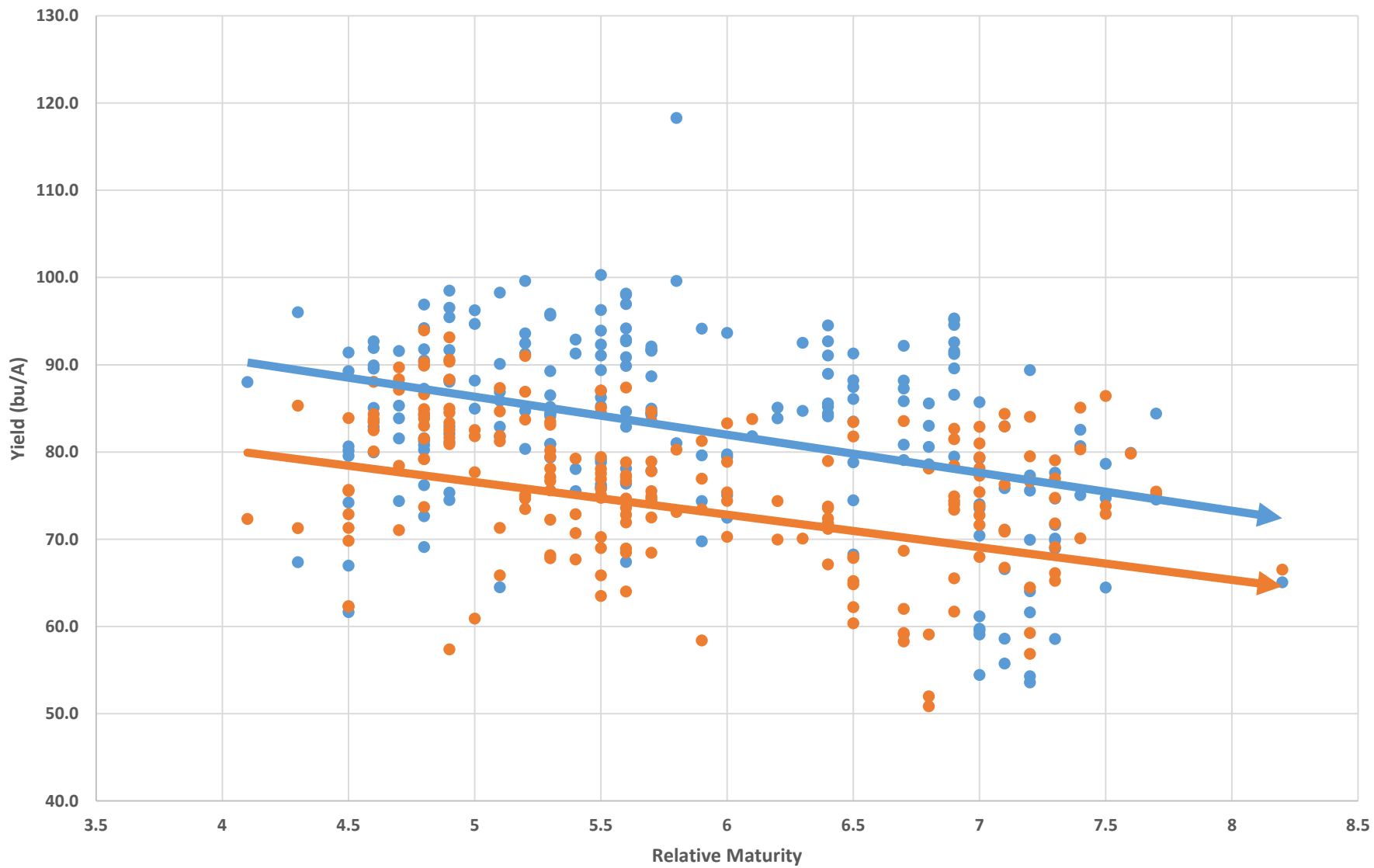
● Full Season ● Double crop ➔ Linear (Full Season) ➔ Linear (Double crop)

Greene (2017)



● Full Season ● Double crop ➡ Linear (Full Season) ➡ Linear (Double crop)

Rowan



● Full Season ● Double crop ➡ Linear (Full Season) ➡ Linear (Double crop)



Search

Official Variety Testing

- Meet Our Staff
- Events
- Entry Forms
- Corn
- Small Grains
- Soybeans
- Soybean Variety Selection Tool
- Sorghum
- Cotton Variety Calculator
- Departments
Crop & Soil Sciences, Entomology & Plant Pathology
- Other Variety Trial Programs
Alabama, Arkansas, Georgia ...
- Related Links
NC Crop Improvement Association, SCC-33 National Crop Variety Testing Group, University Crop Testing Alliance
- Publications & Factsheets

News and Updates

2018 Small Grains Data Now Available

Wheat and Oat data from the 2017-18 Small Grains OVT tests are now available for viewing. Online tables and ...

— 6 days ago



New Twitter Account

For those that use Twitter, the NC OVT has a new Twitter account (@NCOVT) where we will be posting ...

— 7 months ago

Soybean Variety Selection Tool

In conjunction with the North Carolina Soybean Producers Association, we are pleased to host the updated Soybean Variety Selection ...

— 6 months ago

2017 Soybean Data - NOW AVAILABLE

The 2017 NC OVT soybean data is now available on the website for viewing and download. This includes both ...

— 7 months ago

2017 Sorghum Data - NOW





- Small Grains
- Soybeans
- Soybean Variety Selection Tool
- Sorghum
- Cotton Variety Calculator
- Departments
Crop & Soil Sciences, Entomology & Plant Pathology
- Other Variety Trial Programs
Alabama, Arkansas, Georgia ...
- Related Links
NC Crop Improvement Association, SCC-33 National Crop Variety Testing Group, University Crop Testing Alliance
- Publications & Factsheets

[Home](#) » [MG5 Early Statewide – 2017](#)

MG5 Early Statewide – 2017

[PDF](#)

- TWEET THIS PAGE
- SHARE ON FACEBOOK
- EMAIL THIS ARTICLE
- PRINT THIS ARTICLE

Company/Brand	Trait	Variety	FULL SEASON		DOUBLE CROP	
			Yield (bu/A)	Height (in)	Yield (bu/A)	Height (in)
Pioneer	RR	P55T81R	83.0*	37.8	67.0	28.6
Pioneer	Xtend	P55A49X	82.8	36.7	69.5	27.6
Bayer	LL	CZ 5147 LL	82.5	36.0	63.6	27.3
Dyna-Gro	RR2/STS	S52RS86	82.3	37.9	74.4*	30.3
Southern Harvest	LL	SH 5215 LL	81.4	38.0	70.6	28.6
Stine	RR2	ST 55RI02	81.2	36.4	70.5	28.8
Armor	RR2	55-R68	81.1	36.6	70.3	28.4
UniSouth Genetics	Conv	USG Ellis	81.0	36.2	67.3	28.3
Southern Harvest	LL	SH 5515 LL	81.0	39.1	68.6	28.1
Pioneer	RR	P52A26R	80.7	37.5	66.4	29.1
Bayer	LL	CZ 5150 LL	80.6	37.5	66.1	29.6

- YOU MIGHT ALSO LIKE**
- [MG5 Early Greene - 2017](#) — Official Variety Testing
 - [MG5 Early Beaufort - 2017](#) — Official Variety Testing
 - [MG5 Early Rowan - 2017](#) — Official Variety Testing
 - [MG5 Early Pasquotank - 2017](#) — Official Variety Testing
 - [MG5 Early Sampson - 2017](#) — Official Variety Testing
 - [MG5 Early Statewide - 2 Year](#) — Official Variety Testing



Tweets from @NCOVT

Tweets by @NCOVT

NC OVT Program @NCOVT

		STATEWIDE		Beaufort		Perquimans		Robeson		Rowan		Union	
Company/Brand	Variety	Yield (bu/A)	Rank	Yield (bu/A)	Rank	Yield (bu/A)	Rank	Yield (bu/A)	Rank	Yield (bu/A)	Rank	Yield (bu/A)	Rank
Syngenta	SY Viper	100.8*	1	72.3	8	91.6	8	98.3	5	122.5*	1	120.3	3
UniSouth Genetics	USG 3458	98.7	2	66.6	31	92.1	7	93.0	13	117.8	3	124.6*	1
AgriMAXX	AgriMAXX 474	97.5	3	71.2	13	90.6	11	95.9	7	114.3	5	116.7	6
Dyna-Gro	9811	96.7	4	69.2	21	93.0	2	92.8	15	112.6	6	112.6	15
Pioneer	26R59	96.3	5	61.4	46	92.6	5	94.3	9	110.2	14	123.0	2
UniSouth Genetics	USG 3118	96.0	6	65.0	37	90.6	10	100.2*	1	112.0	9	110.3	24
Armor	Riptide	95.8	7	67.9	26	88.3	19	92.1	19	115.1	4	115.9	7
UniSouth Genetics	USG 3329	95.7	8	71.5	11	92.8	3	87.4	31	112.3	7	110.4	23
Pioneer	26R45	95.7	9	62.5	45	90.4	12	89.9	26	118.1	2	112.7	13
Seedway	SW64SR	95.6	10	68.4	24	94.9*	1	87.8	29	111.2	12	108.7	30
Progeny	#TURBO	95.5	11	67.6	29	89.1	16	90.7	23	111.6	10	120.3	4
Progeny	#WARRIOR	95.3	12	66.3	33	90.7	9	93.4	11	109.1	21	117.8	5
AgriMAXX	AgriMAXX 481	94.9	13	61.0	48	89.0	17	99.1	3	111.3	11	113.0	11
Virginia Tech	Hilliard	94.4	14	70.6	16	88.4	18	90.3	24	110.7	13	112.8	12
Southern Harvest	SH 4300	94.2	15	71.2	14	89.3	14	95.1	8	108.0	26	106.6	37
Pioneer	26R10	93.9	16	73.4	4	88.1	20	87.8	28	110.1	15	110.5	22
Tidewater Seed	TWS 2818	93.8	17	73.8	3	92.6	6	81.4	52	109.5	19	106.0	40
Syngenta	SY 547	93.7	18	71.9	9	89.4	13	85.4	37	107.7	29	114.8	9
AgriMAXX	AgriMAXX 473	93.7	19	73.4	5	84.2	32	96.8	6	107.5	30	112.7	14
UniSouth Genetics	USG 3536	93.6	20	73.3	7	82.2	39	98.8	4	109.7	17	110.6	21
CROPLAN	SRW 9606	93.0	21	64.0	42	89.2	15	85.9	35	109.3	20	114.9	8
Armor	Mayhem	92.7	22	71.0	15	84.9	29	92.3	18	107.3	31	112.0	17
Dyna-Gro	9600	92.6	23	64.1	41	87.5	22	88.6	27	108.6	25	114.0	10
CROPLAN	SRW 8550	92.6	24	73.4	6	82.5	37	93.6	10	108.8	24	110.2	25
Featherstone Seed	Featherstone 73	91.8	25	68.7	23	85.6	28	85.4	38	109.9	16	108.9	29
Pioneer	26R41	91.7	26	67.8	27	86.7	24	90.0	25	107.8	28	104.2	48
Harvey's	AP 1947	91.3	27	60.5	49	83.3	34	100.0	2	104.6	38	111.8	19
Progeny	#BULLET	91.1	28	71.3	12	78.7	56	92.5	17	112.2	8	105.1	45
UniSouth Genetics	USG 3895	91.0	29	74.7	2	84.3	31	81.1	53	107.2	32	110.0	27
Dyna-Gro	9701	90.7	30	69.4	19	78.9	53	91.2	21	109.1	22	111.9	18
CROPLAN	SRW 9415	90.7	31	69.3	20	83.2	35	83.2	41	108.9	23	110.9	20
UniSouth Genetics	USG 3228	90.5	32	69.7	17	87.6	21	82.7	46	104.6	39	105.4	44
Limagrain	LCS Ammo	90.3	33	65.8	36	86.7	25	85.6	36	105.3	37	106.2	39

Traits

- Conventional
 - NC-Dunphy
 - USG Ellis
 - NC-Wilder
 - N7003CN

- RR1/RR2 (*Glyphosate*)
 - 56R8
 - P55T81R
 - REV 55A67
 - **S58RY78**
 - **55-R68**
 - USG75B75R
 - **S74-M3**
 - P76T54R2
 - **S52RS86**
 - **S58-Z4**



Traits

- LibertyLink (*Glufosinate*)
 - CZ 5147 LL
 - **SH 5215 LL**
 - CZ 5150 LL
 - **P4930 LL**
 - ST 52LI20
 - SH 4817 LL
 - P 6315 LL
 - CZ 6515 LL
 - **USG 76G45LS**



Traits

- Xtend (*Dicamba + Glyphosate*)
 - **S48SX78**
 - **AG48X7**
 - **AG49X6**
 - P 5688 RX
 - **57-D77**
 - P55A49X
 - **MS 5607 RXT**
 - **S56XT98**
 - P 5376 RX
 - **MS 7057 RXT**
 - **P 7082 RX**
 - USG 7698XT
 - TS6289R2X
 - SG 6985XT
 - AG64X8
 - USG 7697XT
 - S64XT18
 - AG72X7



Upcoming Traits

- Enlist E3 (**Waiting on export approval**)
 - 2,4-D + Glyphosate + Glufosinate
- Balance GT (GT27) (**Waiting on herbicide approval**)
 - Glyphosate + New Group 27/HPPD herbicide
- LibertyLink GT27 (**Waiting on herbicide approval**)
 - Glufosinate + Glyphosate + New Group 27/HPPD herbicide

Resistances

- Nematode
 - RKN
 - SCN
- Disease
 - Frog-eye Leaf Spot
 - Phytophthora Root Rot
 - Sudden Death Syndrome (SDS)
- Misc
 - Green stem
 - Chloride excluder
 - Metribuzin tolerance
 - STS tolerance

S49-F8

Intensive Management

40,000 plant/a

Seed Treatment

50lb N at Planting

Intensive Management

100,000 plant/a

Seed Treatment

50lb N at Planting



**Intensive
Soybean
System –**
40,000 plants/a
Seed Trtmt
N at Planting
Foliar N
Fungicide

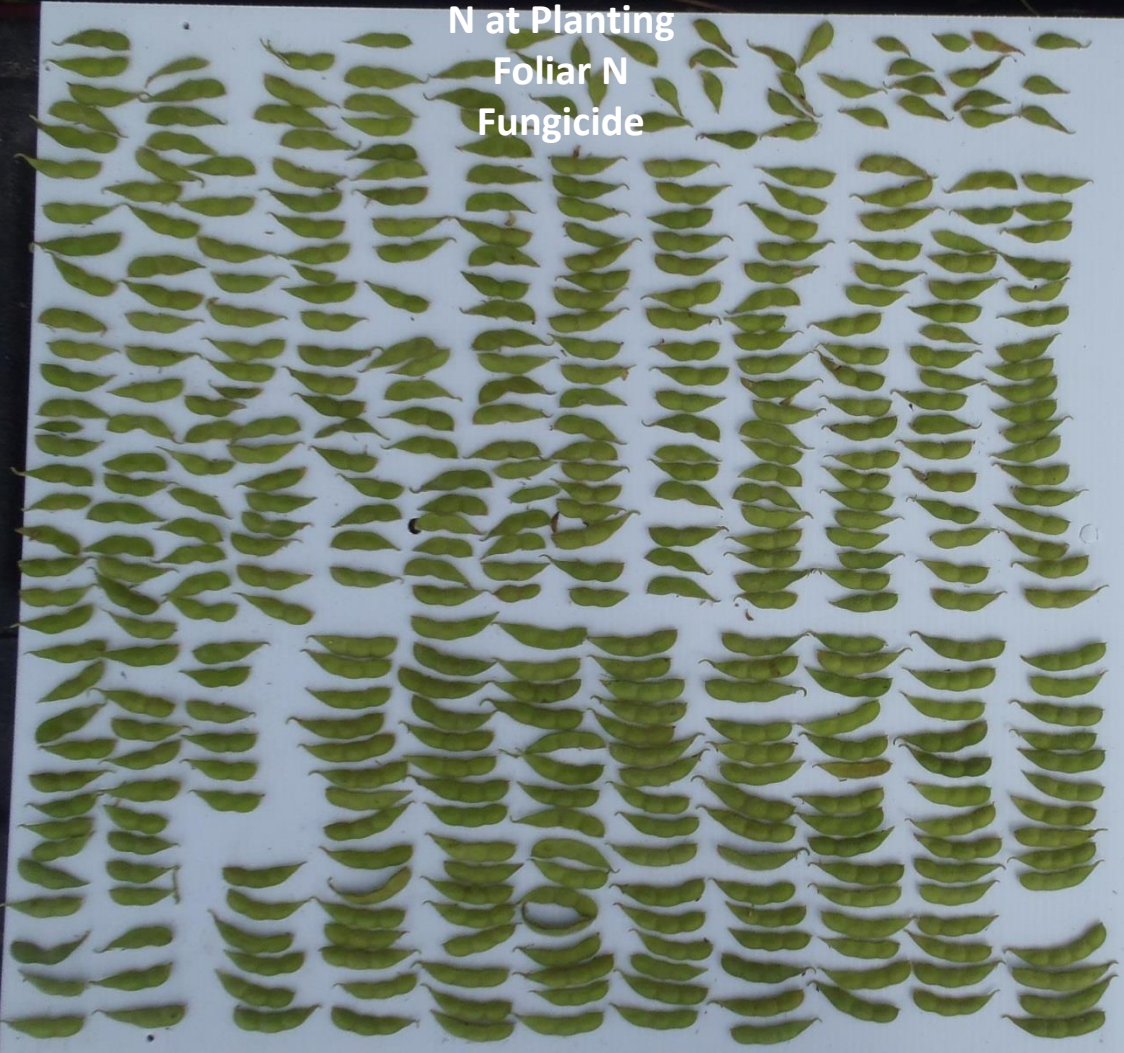


**Standard
Soybean
System –**
100,000 plants/a
No Seed Trtmt
No N at Planting
No Foliar

15/09/2014

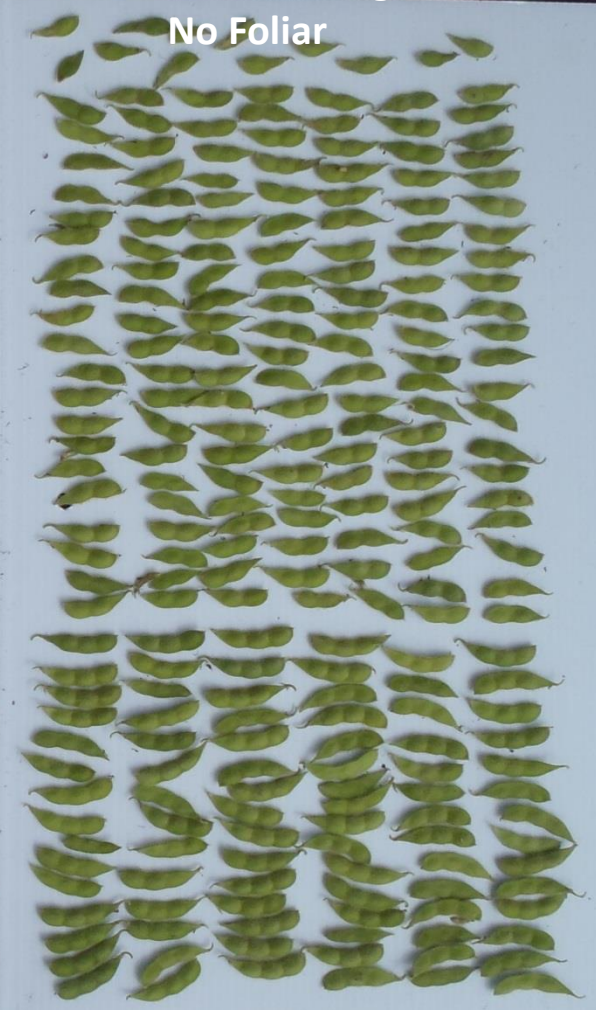
Intensive Soybean System –

40,000 plants/a
Seed Treatment
N at Planting
Foliar N
Fungicide



Standard Soybean System –

100,000 plants/a
No Seed Treatment
No N at Planting
No Foliar

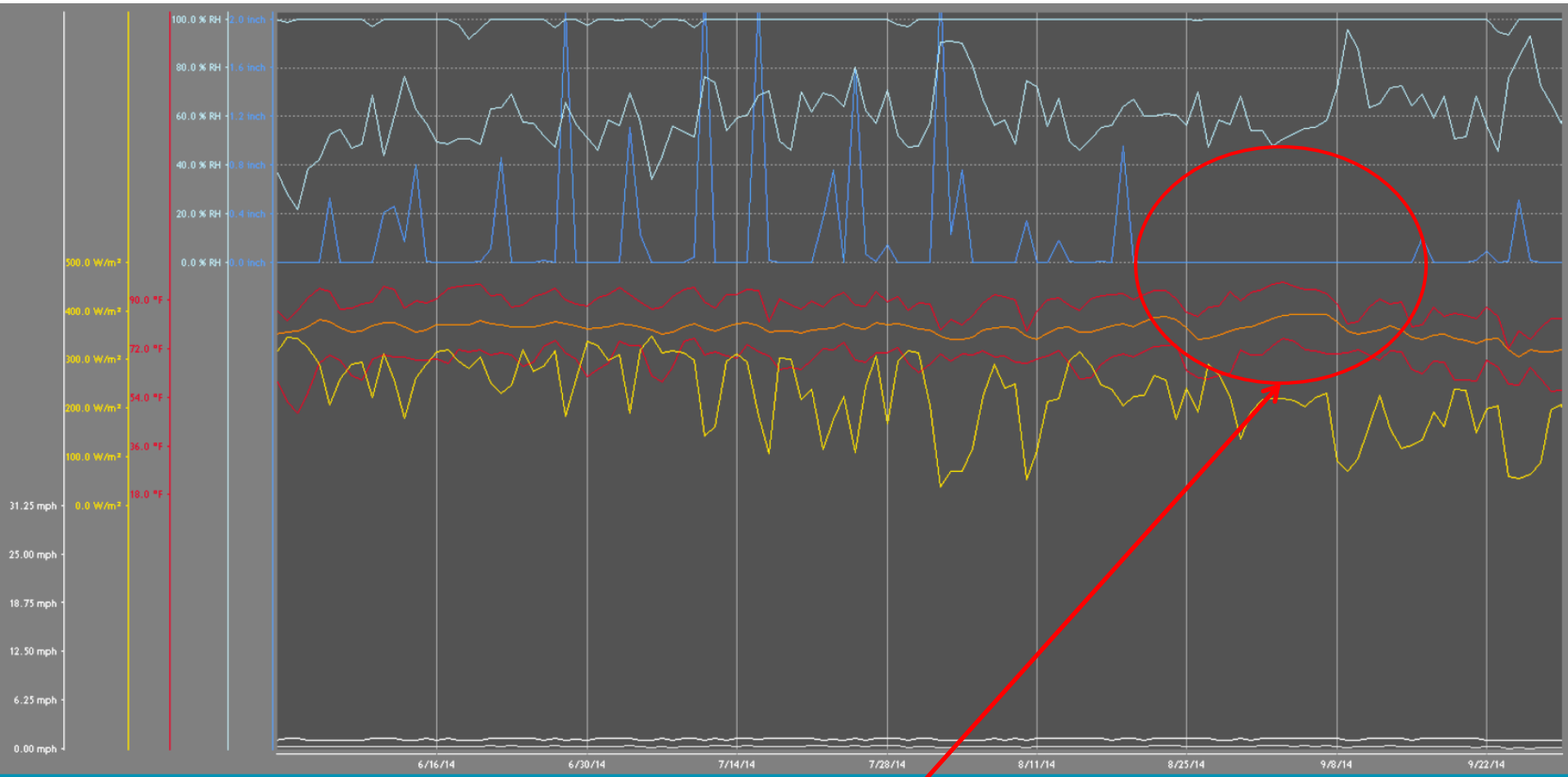


15/09/2014

Potential Yield

Comparing 100,000 to 40,000 plants per acre

Component	Low Population	Higher Population
Plants per acre	40,000	100,000
Pods per plant	113	62
Seeds per plant	305	164
Seed Weight	.42 g	.28 g
Yield (bu/acre)	188	168

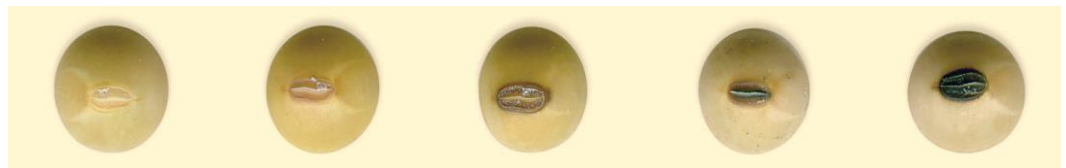


No rainfall for a month (8/18-9/24)

Temperatures at or above 90°

Lower Solar Radiation levels

Appearance



Questions?



Ryan Heiniger

rwheinig@ncsu.edu

(919) 389-8860

Twitter: @NCOVT

Website: www.ncovt.com